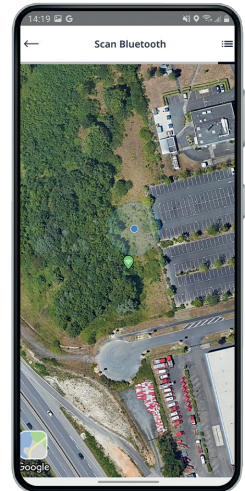


# SUPERVISION

## VERIFY THE LIVE OPERATION

### 1 Go to the site and activate Bluetooth®:

- If you are connected to the internet, a map will appear with the lights points. Otherwise, the list view will appear by default.
- The sets take about 30 minutes to position themselves on their location when the node is first turned on. If you connect during this initialization, they will appear as tiles and then correctly replace themselves on the map once geolocated.
- Discover the status of the different streetlights nearby.



You do not have access to this detected NOVCOM Z



NOVCOM Z out of reach or offline



NOVCOM Z already scanned before but no longer on the current scan (e.g. turned off or out of reach of the Bluetooth® signal)



NOVCOM Z in range, without anomaly



NOVCOM Z in range, no anomalies, update available



NOVCOM Z in range, no anomalies, update in progress



NOVCOM Z in range, with anomaly



NOVCOM Z in range, with anomaly, update available



NOVCOM Z in range, with anomaly, update in progress

### 2 3 tabs will appear for visualise your solar set

Live

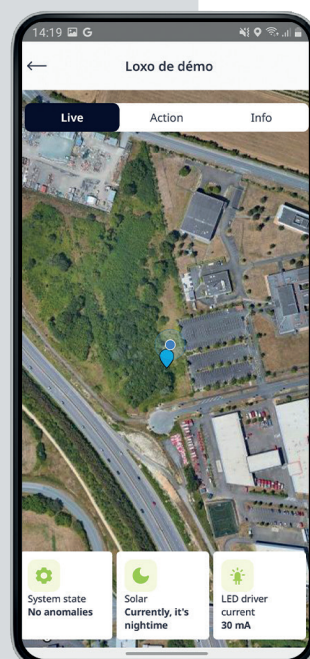
Action

Infos

## LIVE TAB

Access to live map view with main operating indications :

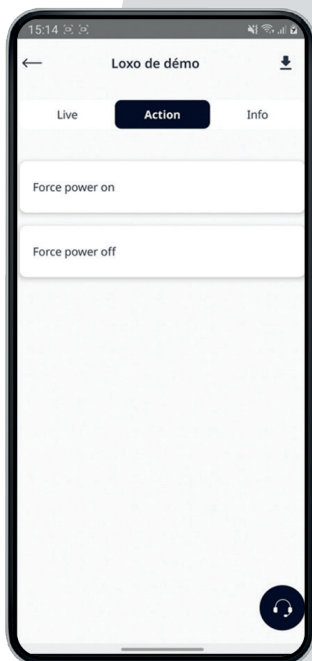
- System status (anomaly detected or not)
- Battery status (state of charge, power, temperature, etc.)
- Driver LED



Live

Action

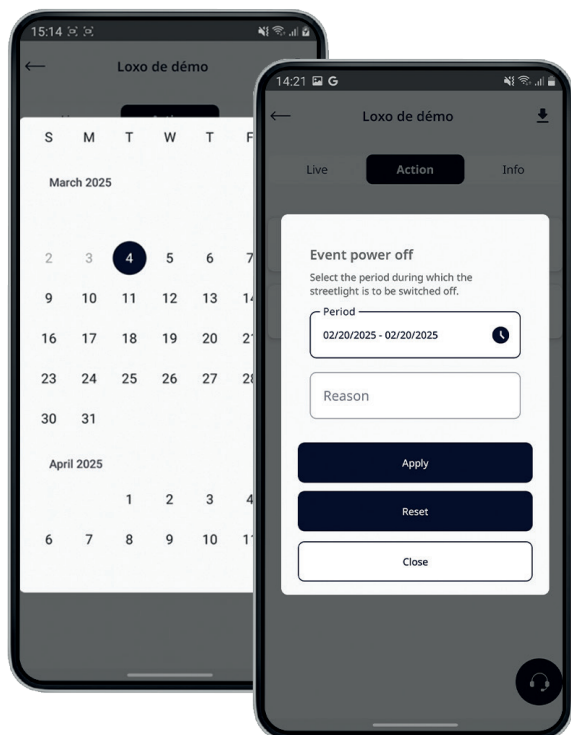
Infos



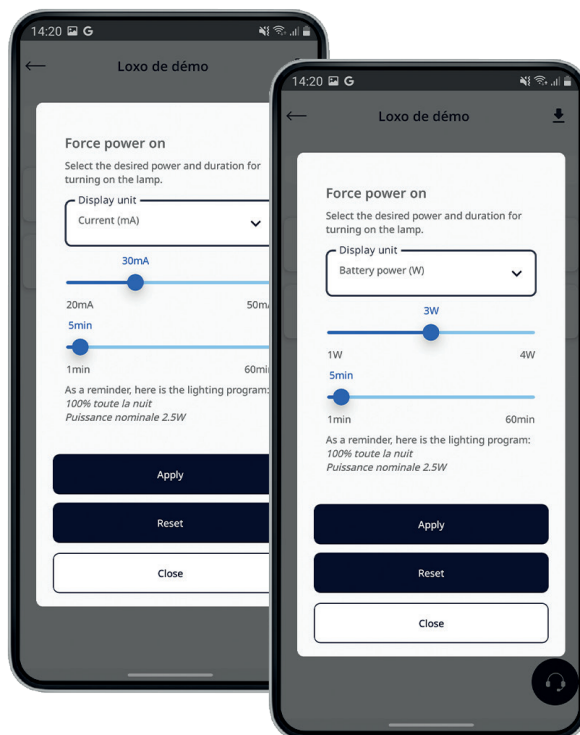
## ACTION TAB

- **Diagnostic power off** Forced off for diagnostic up to 60 minutes.
- **Event power off** Duration: 100 days max. Can be scheduled up to 44 days before the event (calendar view).
- **Lighting modulation** Multiple value scales. Duration: up to 60 minutes. Customized for each project.

*Event power off*



*Lighting modulation*



Live

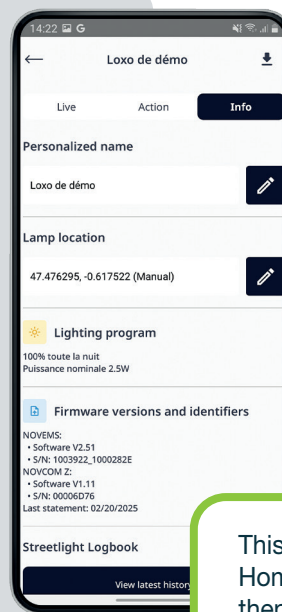
Action

Infos

## INFOS TAB

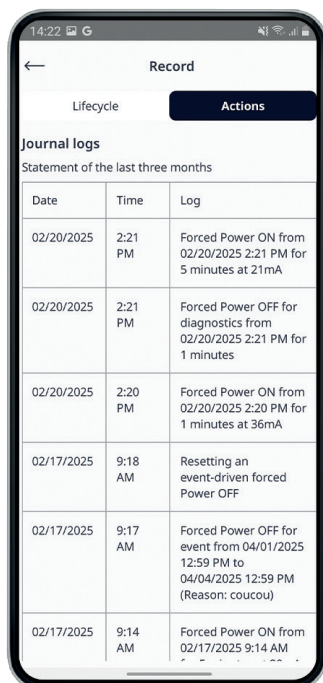
Find the characteristics of your street lamp:

- Name (customizable)
- Location (which you can modify manually)
- Lighting program
- Technical specifications
- Log view (live if connected or last log read if offline)



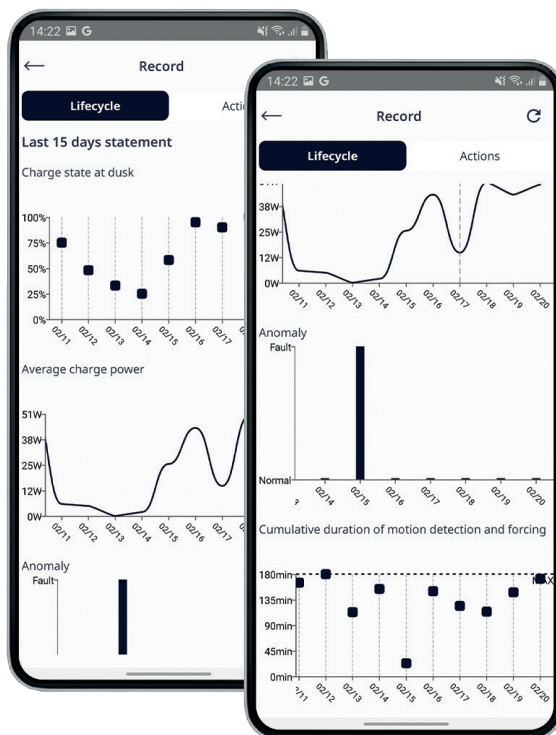
This tab is available offline.  
Home > project > sub-project  
then the desired point.

### Actions history



Date	Time	Log
02/20/2025	2:21 PM	Forced Power ON from 02/20/2025 2:21 PM for 5 minutes at 21mA
02/20/2025	2:21 PM	Forced Power OFF for diagnostics from 02/20/2025 2:21 PM for 1 minutes
02/20/2025	2:20 PM	Forced Power ON from 02/20/2025 2:20 PM for 1 minutes at 36mA
02/17/2025	9:18 AM	Resetting an event-driven forced Power OFF
02/17/2025	9:17 AM	Forced Power OFF for event from 04/01/2025 12:59 PM to 04/04/2025 12:59 PM (Reason: coucou)
02/17/2025	9:14 AM	Forced Power ON from 02/17/2025 9:14 AM

### Operating history



### AVAILABLE INFORMATION (over the last 15 days)

- The state of charge at dusk (%)
- The average charging power (W)
- Possible anomalies
- The cumulative duration of motion detection and forcing